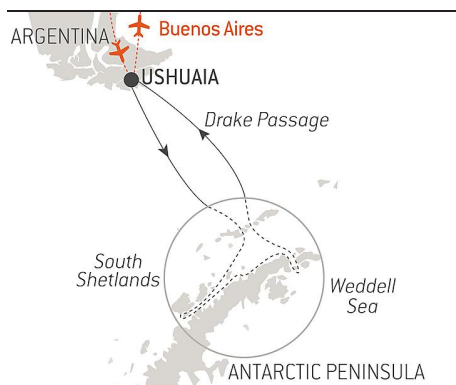


Antarctica: The White Continent – with Smithsonian Journeys

From **2/21/2023**
to **3/3/2023**

Ship: **LE LYRIAL**

From **Ushuaia**
to **Ushuaia**



Overnight in Buenos Aires + roundtrip flights Buenos Aires/Ushuaia/Buenos Aires + visit + transfers included

In alliance with Smithsonian Journeys.

This cruise is part of a collection of PONANT voyages that are specially-tailored for English-speaking travelers who want to engage with the world. In addition to the usual elements of the PONANT experience, the listed price for these voyages includes transfers to and from the ship, talks and discussions aboard ship by world class experts, and a shore excursion or activity in each port of call that encourages guests to embrace the sights, sounds, tastes, and smells of the local environment and culture.

PONANT invites you on a **polar expedition cruise** to the heart of the icy realm that is the Antarctic Peninsula. Embark on an unforgettable **11-day** voyage and succumb to the enchantment of the breathtaking landscapes inhabited by astonishing wildlife.

The start of your cruise will be marked by the crossing of the mythical **Drake Passage**, during which you will likely be escorted by several albatrosses and Cape petrels, the sentinels of these often-choppy waters.

Your ship will then reach the **White Continent**, realm of the unexpected. Weather and ice conditions permitting, this extreme environment where nature reigns supreme will reveal to you its most beautiful secrets through numerous discoveries.

On this uninhabited land, which wasn't explored until the 19th century, your encounters with the wildlife will no doubt be one of the highlights of your experience. The **Gentoo, Adélie, and Chinstrap penguins, Humpback whales, seals, and seabirds** will provide you with cherished lifelong memories.

Each day, whether on land, aboard your ship, or during a **zodiac outing**, you will be surrounded by a grandiose landscape ranging from **icebergs** to **ice floe** and ancient **glaciers**.

We are privileged guests in these extreme lands where we are at the mercy of weather and ice conditions. Landings on certain sites and the observation of certain wildlife cannot be guaranteed. They vary from day to day, making each PONANT cruise a unique experience. The Captain and the Expedition Leader will make every effort to ensure that your experience is as rich as possible, while complying with the safety rules and instructions imposed by the IAATO.



The information in this document is valid as of 11/23/2022

Antarctica: The White Continent – with Smithsonian Journeys

YOUR STOPOVERS :

USHUAIA

Embarkation 2/21/2023 from 4:00 PM to 5:00 PM

Departure 2/21/2023 at 6:00 PM

Capital of Argentina's **Tierra del Fuego** province, Ushuaia is considered the gateway to the White Continent and the South Pole. Nicknamed “**El fin del mundo**” by the Argentinian people, this city at the end of the world nestles in the shelter of mountains surrounded by fertile plains that the wildlife seem to have chosen as the ultimate sanctuary. With its exceptional site, where the Andes plunge straight into the sea, Ushuaia is one of the most fascinating places on earth, its very name evocative of journeys to the unlikely and the inaccessible...

CROSSING THE DRAKE PASSAGE

Arrival 2/22/2023

Departure 2/23/2023

Use your days spent in the **Drake Passage** to familiarise yourself with your ship and deepen your knowledge of the Antarctic. The Expedition Leader will first present the IAATO rules of conduct that must be observed during landings in the region and will explain everything you need to know about the zodiac outings. Lectures about the history and wildlife of the Antarctic will be an opportunity for you to learn more about this magical region, where every cruise is a **unique experience**. From the ship's bridge, you will experience exceptional sailing moments before joining the naturalist-guides on your ship's exterior decks to look out for albatrosses, cape petrels, and other seabirds flying over the Drake Passage.

ANTARCTIC PENINSULA

Arrival 2/24/2023

Departure 2/28/2023

Succumb to the magic of a place unlike any other. To this day, the mythical **Antarctic Peninsula** still holds real fascination and promises its visitors unforgettable moments. Throughout your adventure in this icy realm, you will find yourself in the heart of a **spectacular decor** in subtle shades of blue and white, surrounded by **exceptional wildlife**. Penguins, humpback whales, seals and giant petrels are at home here, as are elephant seals, fur seals, Antarctic minke whales, and orcas. Depending on which sites you will be lucky enough to visit, you may get the chance to observe them and share with them the beauty of these extreme parts.

Each day, based on ice conditions, the Captain and the Expedition Leader will suggest **zodiac outings or landings** to discover the infinite riches of the Antarctic Peninsula. Glaciers, ice floe, tabletop icebergs, mountain peaks that plunge straight into the sea, volcanic beaches, research stations, enchanting bays, and vestiges of the whaling

industry: these are the faces of the Antarctic that will likely reveal themselves to you, in a hushed and surreal atmosphere. You will sail in the wake of Jean-Baptiste Charcot, Adrien de Gerlache and Sir Ernest Shackleton, great Antarctic explorers who, from the 19th century, set out to conquer these remote and uninhabited lands.

CROSSING THE DRAKE PASSAGE

Arrival 3/1/2023

Departure 3/2/2023

If there is one place, one sea, one waterway dreaded by tourists, researchers and hardened seafarers alike, it is undoubtedly **Drake Passage**. Situated at the latitude of the infamous Furious Fifties winds, between Cape Horn and the South Shetland Islands, it is **the shortest route to connect Antarctica to South America**. Seasoned navigators will tell you that you must earn your visit to the White Continent! As the Antarctic convergence zone where cold currents rising up from the South Pole meet warmer equatorial water masses, Drake Passage harbours a very diverse marine fauna. Don't forget to look to the sky to catch a glimpse of elegant albatross and **Cape petrels**, playfully floating about in the wind around your ship.

USHUAIA

Arrival 3/3/2023

Disembarkation 3/3/2023 at 7:00 AM

Capital of Argentina's **Tierra del Fuego** province, Ushuaia is considered the gateway to the White Continent and the South Pole. Nicknamed "**El fin del mundo**" by the Argentinian people, this city at the end of the world nestles in the shelter of mountains surrounded by fertile plains that the wildlife seem to have chosen as the ultimate sanctuary. With its exceptional site, where the Andes plunge straight into the sea, Ushuaia is one of the most fascinating places on earth, its very name evocative of journeys to the unlikely and the inaccessible...